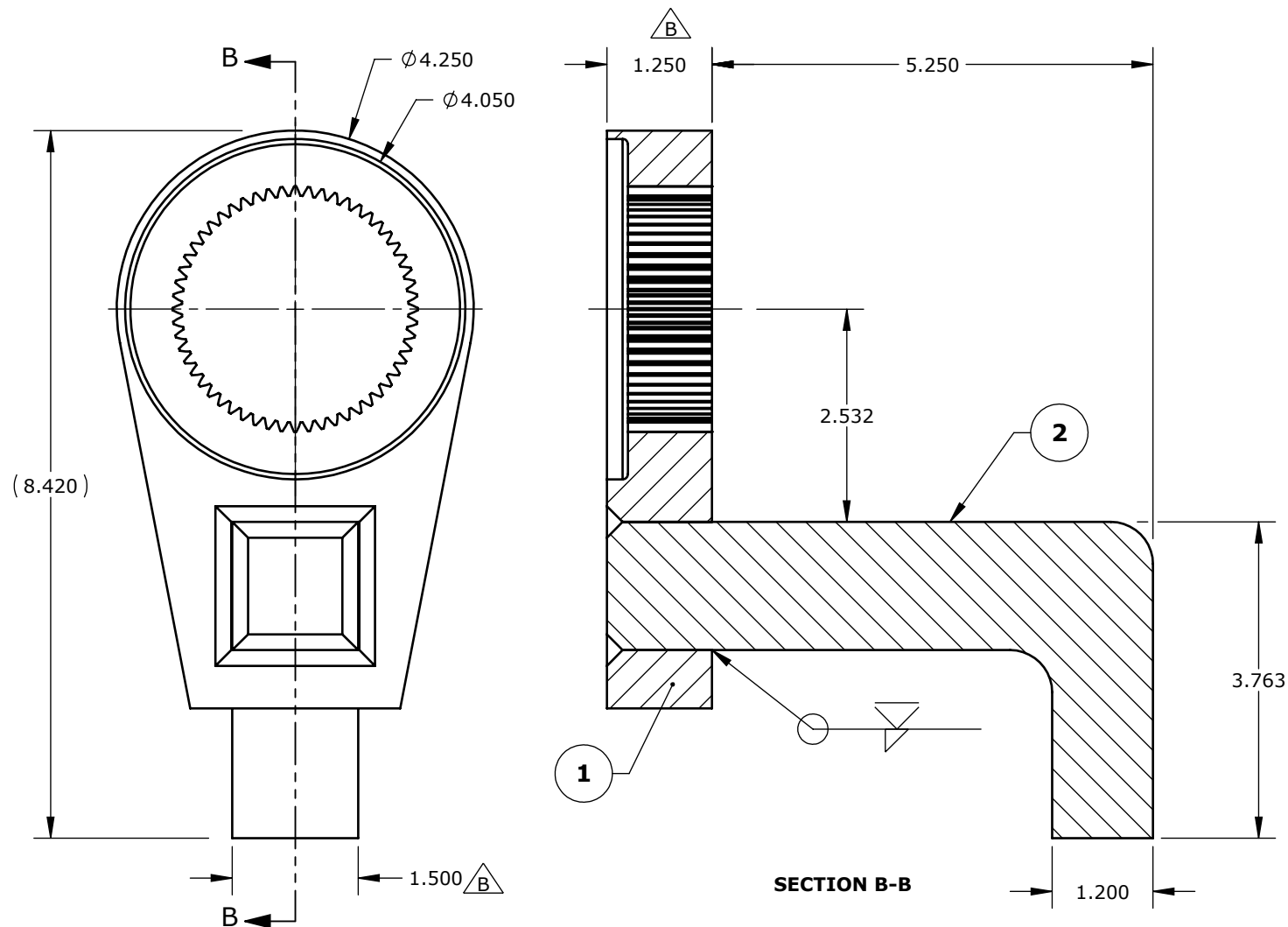


DO NOT SCALE DRAWING



RELEASED FOR FABRICATION  
ENGINEERING K.P. DATE 16.10.20

NOTE: FINISH YELLOW CHROMATE

REV.	DESCRIPTION	ENG.	E.C.O.	YY.MM.DD	UNLESS OTHERWISE SPECIFIED DIMENSIONS ARE IN INCHES.	C.A.D. SCALE	1:2	ITEM NO.	PART NUMBER	DESCRIPTION	QTY.
B	21754A WAS 11510G; 26088A WAS 21655A; 1.50 WAS 1.25; 1.250 WAS 1.00; TITLE WAS Q11297 - RAD 50 DEEP ARM 90 DEGREE	K.P.		16.10.20	TOLERANCES AND SURFACE FINISH:	MATERIAL	N/A	1	21754A	BLANK 2.13-1.53/1.53 RAD 50 1.25 SP1	1
					DECIMAL LINEAR ANGULAR T.I.R. POSITION FINISH	WEIGHT		2	26088A	ARM 6.50 X 3.76 X 1.5	1
					.xxxx ±.002 ±.05° .002 Ø.002 32RA						
					.xxx ±.005 ±.10° .005 Ø.005 63RA						
					.xx ±.010 ±.25° .010 Ø.010 125RA						
					.x ±.020 ±.50° .020 Ø.020 250RA						
					. ±.063 ±1.0° .063 Ø.063 500RA						
					BREAK EDGES, UNLESS NOTED .016±.003 x 45°						
					FILLETS, UNLESS NOTED R.010±.003						
						NEW WORLD TECHNOLOGIES INCORPORATED					
						ABBOTSFORD, BRITISH COLUMBIA, CANADA					
						Phone: 604-852-0405, Fax: 604-852-0269					
						Website: www.radtorque.com					
						REACTION ARM 5.25 DEEP					
						RAD 50 - 90 DEGREE 1.25 SP1					
						DWG. NO.					
						REV. SHT.					
						SZ.					
						15118B					
						1/1					