

LARGE CALIBRATION SYSTEM 18K

Part Number: **33736**



LIGHTER **FASTER** STRONGER

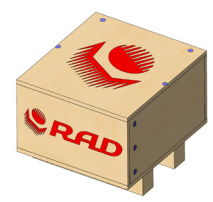
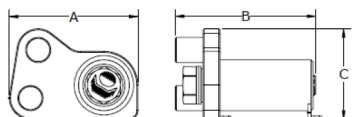
Designed for larger RAD Torque tools, the 18K Large Calibration System includes a stand and a 18K Smart Socket™, and features a rundown fixture designed and produced to accurately calibrate RAD Torque tools up to 18,000 ft. lbs/ 24,000 Nm. This calibration system is engineered for strength and durability. A special shipping crate also comes with the stand.

A 12K Smart Socket™ is also available for purchase.

DIMENSIONS

IMPERIAL		
DIMENSION A	DIMENSION B	DIMENSION C
15.08"	19.70"	10.60"

METRIC		
DIMENSION A	DIMENSION B	DIMENSION C
383 mm	501 mm	270 mm



18K SMART SOCKET™ 2.5" SQUARE DRIVE

TOOL	REACTION ARM
B-RAD X 11K/15K-M	34947 - deep
E-RAD 11K/15K-M	34947 - deep
RAD 110DX	34947 - deep

SPECIFICATIONS

Torque Ranges: 900 - 18,000 ft. lbs/
12,000 - 24,000 Nm
Weight: 235 lbs./ 106.5 kg
Square Drive: 2.5"
Repeatability: +/-1%



NEW WORLD TECHNOLOGIES INC

#100 - 30722 MARSHALL RD | ABBOTSFORD, BC V2T 0H9 | CANADA
604.852.0405 | INFO@RADTORQUE.COM | RADTORQUE.COM