

# LARGE CALIBRATION SYSTEM 12K

Part Number: **30526**



## LIGHTER **FASTER** STRONGER

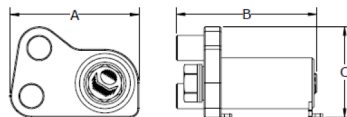
Designed for larger RAD Torque tools, the 12K Large Calibration System includes a stand and a 12K Smart Socket™, and features a rundown fixture designed and produced to accurately calibrate RAD Torque tools up to 12,000 ft. lbs/ 16,000 Nm. This calibration system is engineered for strength and durability. A special shipping crate also comes with the stand.

A 18K Smart Socket™ is available for purchase for even bigger jobs.

### DIMENSIONS

IMPERIAL		
DIMENSION A	DIMENSION B	DIMENSION C
15.08"	19.70"	10.60"

METRIC		
DIMENSION A	DIMENSION B	DIMENSION C
383 mm	501 mm	270 mm



### 12K SMART SOCKET™ 1.5" SQUARE DRIVE

TOOL	REACTION ARM
RAD 80DX	23144 - cast
E-RAD 7500/10K-M	23144 - cast
B-RAD X 8K/11K-M	23144 - cast
RAD 110DX	23776 - standard 25664 - cast
E-RAD 11K/15K-M	23776 - standard 25664 - cast

### SPECIFICATIONS

Torque Ranges: 600 - 12,000 ft. lbs/  
800 - 16,000 Nm  
Weight: 235 lbs./ 106.6 kg  
Square Drive: 1.5"  
Repeatability: +/-1%



## NEW WORLD TECHNOLOGIES INC

#100 - 30722 MARSHALL RD | ABBOTSFORD, BC V2T 0H9 | CANADA  
604.852.0405 | INFO@RADTORQUE.COM | RADTORQUE.COM