

SMART SOCKET 33mm



Part Number: **20879**



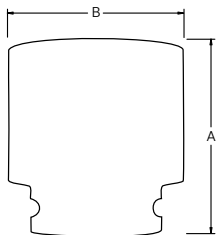
LIGHTER **FASTER** STRONGER

RAD Smart Sockets™ use RAD Torque's transducer technology combined with a socket to measure torque applied to the bolt. Its a perfect audit tool for inspecting bolted joints and a master calibration for torque tools.

SPECIFICATIONS

Torque Ranges: 150 ft. lbs. - 1500 ft. lbs.
Weight: 2.65 lbs.
Square Drive: 1.0"
Repeatability: +/-1
Accuracy: +/-1%

DIMENSIONS



DIMENSION A	DIMENSION B
3.94"	2.83"

Included Storage Case

Weatherproof. Comes with Plug & USB cord.



Bluetooth connectivity to your smart phone or tablet



NEW WORLD TECHNOLOGIES INC

#100 - 30722 MARSHALL RD | ABBOTSFORD, BC V2T 0H9 | CANADA
604.852.0405 | INFO@RADTORQUE.COM | RADTORQUE.COM