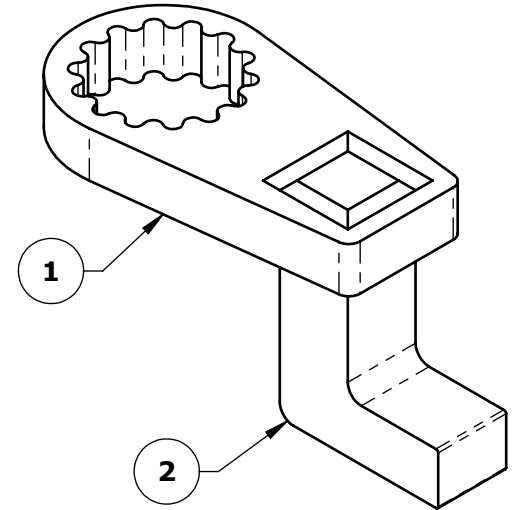
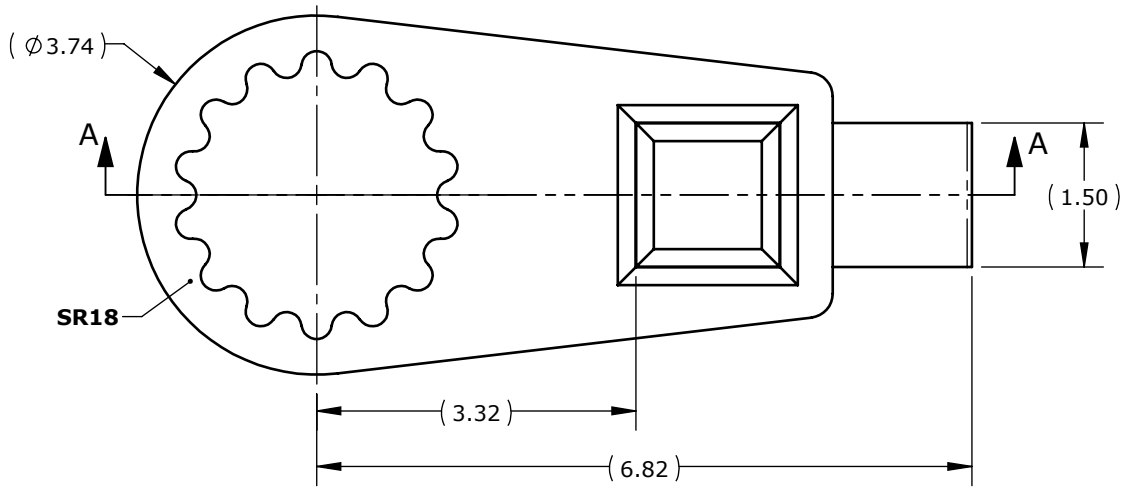
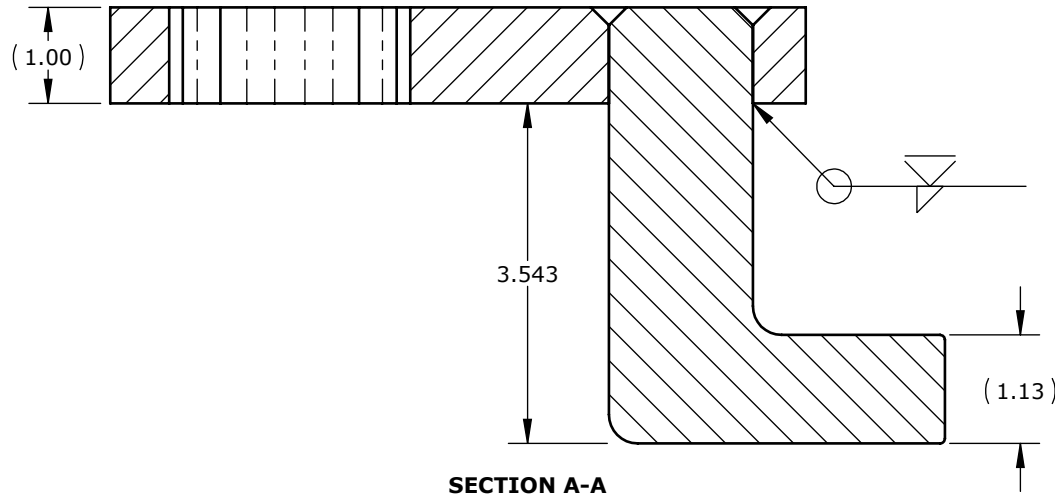


DO NOT SCALE DRAWING



SCALE 1:3



SECTION A-A

RELEASED FOR FABRICATION
ENGINEERING N.D. DATE 18.02.19

NOTES:

FINISH: YELLOW CHROMATE DIP

ITEM NO.	PART NUMBER	DESCRIPTION	QTY.
1	28087A	BLANK-3.32-1.5/1.5-5.37-1.0-SR18	1
2	28088A	ARM-4.54-3.5-1.5-90	1

REV.	DESCRIPTION	ENG.	E.C.O.	YY.MM.DD	UNLESS OTHERWISE SPECIFIED DIMENSIONS ARE IN INCHES.	C.A.D. SCALE	1:2	NEW WORLD TECHNOLOGIES INCORPORATED	
					TOLERANCES AND SURFACE FINISH:	MATERIAL		<p>THE INFORMATION CONTAINED HEREIN IS THE CONFIDENTIAL PROPERTY OF NEW WORLD TECHNOLOGIES. ANY REPRODUCTION WITHOUT PRIOR WRITTEN CONSENT FROM NEW WORLD TECHNOLOGIES IS STRICTLY PROHIBITED.</p> <p>NEW WORLD TECHNOLOGIES INCORPORATED ABBOTSFORD, BRITISH COLUMBIA, CANADA Phone: 604-852-0405, Fax: 604-852-0269 Website: www.radtorque.com</p>	
					DECIMAL .xxxx ±.002 ±.05° .002 Ø.002 32RA	WEIGHT		<p>NEW WORLD TECHNOLOGIES INCORPORATED</p>	
					.xxx ±.005 ±.10° .005 Ø.005 63RA	DRAWN	N.D.	18.02.19	TITLE
					.xx ±.010 ±.25° .010 Ø.010 125RA	ENG. CHKD	D.S.		RA-3.54-3.32/6.82-90-50DX-1.0-SR18
					.x ±.020 ±.50° .020 Ø.020 250RA	Q.A. CHKD	A.M.		DWG. NO. 28086A
					. ±.063 ±1.0° .063 Ø.063 500RA	MFG. CHKD	P.M.		REV. SHT. 1/1
					BREAK EDGES, UNLESS NOTED .016±.003 x 45°	ENG. APPD	D.S.		SZ. A
					FILLETS, UNLESS NOTED R.010±.003				