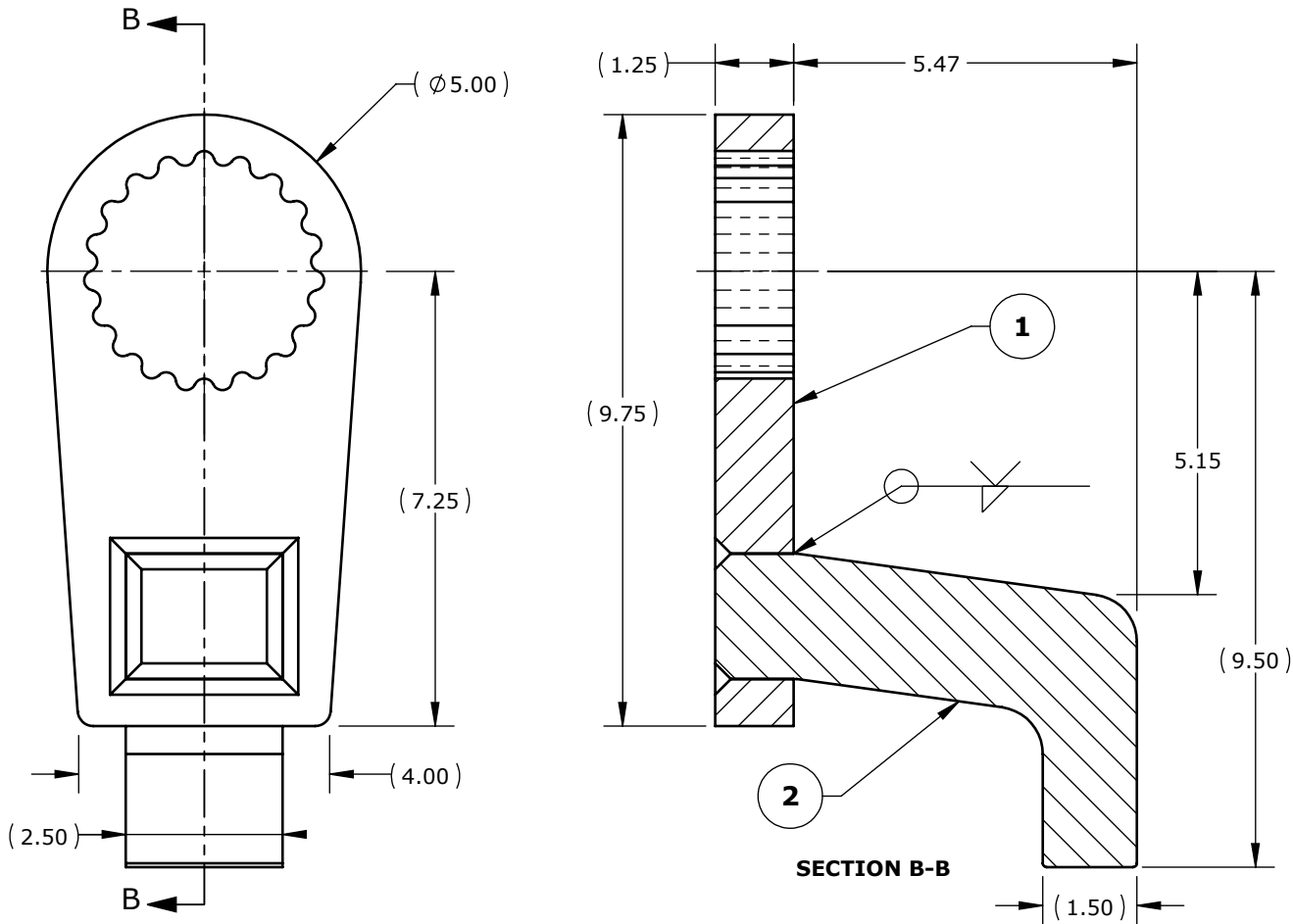



**DO NOT SCALE DRAWING**



**RELEASED FOR FABRICATION**  
**ENGINEERING**  **DATE** 15/04/30

ITEM NO.	PART NUMBER	DESCRIPTION	QTY.
1	23777A	BLANK 7.25 CE 1.25 SR22	1
2	23778A	ARM 6.77 X 4.25 X 2.5 98°	1

NOTES:  
 1. FINISH: YELLOW CHROMATE

REV.	DESCRIPTION	ENG.	E.C.O.	YY.MM.DD

UNLESS OTHERWISE SPECIFIED DIMENSIONS ARE IN INCHES.  
 TOLERANCES AND SURFACE FINISH:

DECIMAL	LINEAR	ANGULAR	T.I.R.	POSITION	FINISH
.xxxx	±.002	±.05°	.002	Ø.002	32RA
.xxx	±.005	±.10°	.005	Ø.005	63RA
.xx	±.010	±.25°	.010	Ø.010	125RA
.x	±.020	±.50°	.020	Ø.020	250RA
.	±.063	±1.0°	.063	Ø.063	500RA

BREAK EDGES, UNLESS NOTED .016±.003 x 45°  
 FILLETS, UNLESS NOTED R.010±.003

C.A.D. SCALE 1:3  
 MATERIAL N/A  
 WEIGHT

NAME	YY.MM.DD
DRAWN	L.T. 15.04.30
ENG. CHKD	
Q.A. CHKD	
MFG. CHKD	
ENG. APPD	

**PROPRIETARY AND CONFIDENTIAL**  
 THE INFORMATION CONTAINED HEREIN IS THE CONFIDENTIAL PROPERTY OF NEW WORLD TECHNOLOGIES. ANY REPRODUCTION WITHOUT PRIOR WRITTEN CONSENT FROM NEW WORLD TECHNOLOGIES IS STRICTLY PROHIBITED.

**NEW WORLD TECHNOLOGIES INCORPORATED**  
 NEW WORLD TECHNOLOGIES INCORPORATED  
 ABBOTSFORD, BRITISH COLUMBIA, CANADA  
 Phone: 604-852-0405, Fax: 604-852-0269  
 Website: www.radtorque.com

**RA 5.47 EXT 98° 110DX 1.25 SR22**

Third Angle Projection  DWG. NO. **23776A** REV. SHT. 1/1 SZ. A