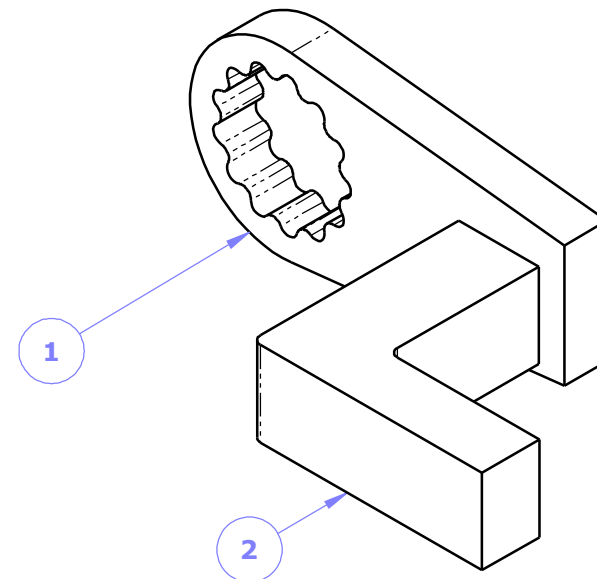
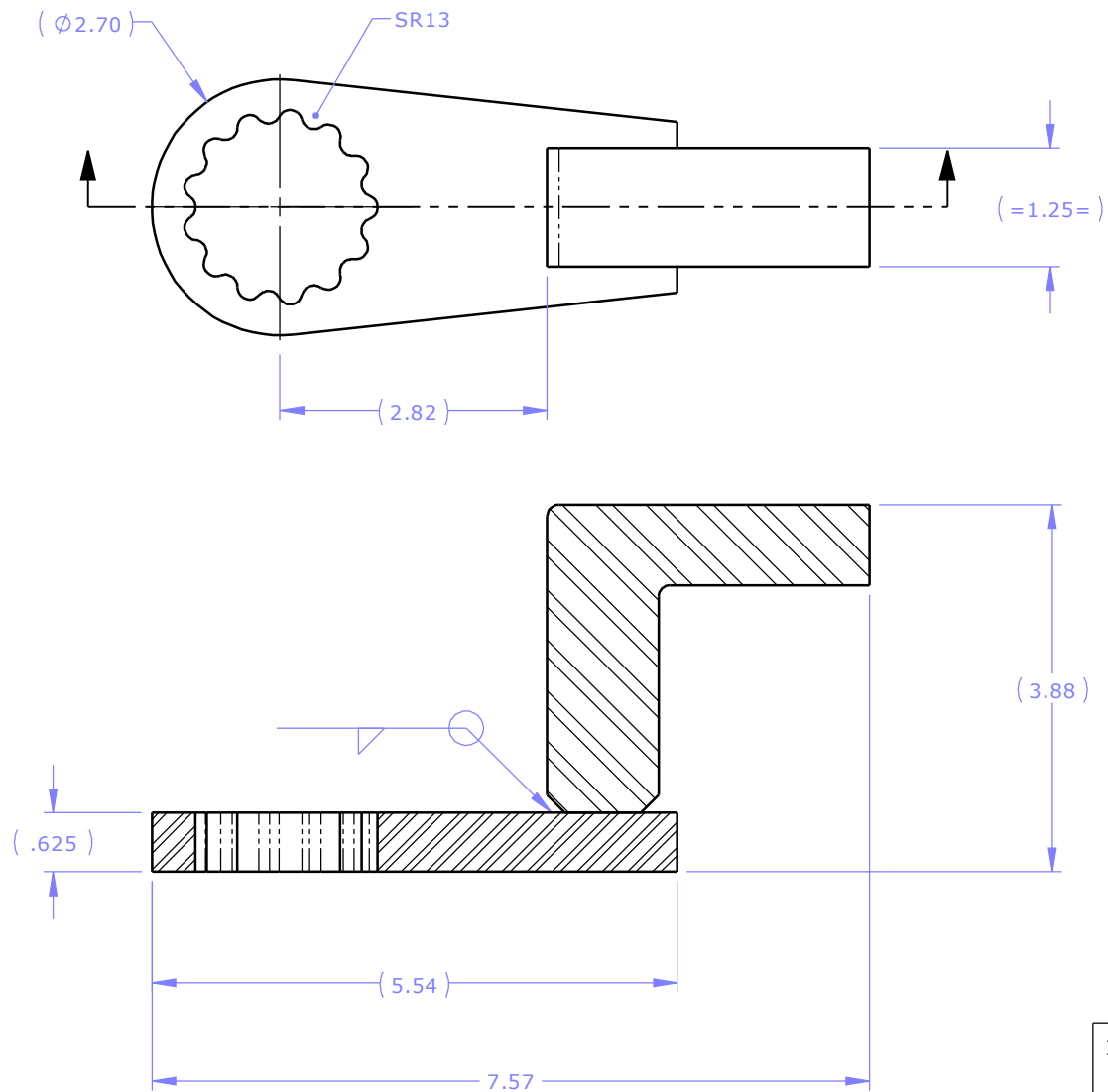


DO NOT SCALE DRAWING



NOTES:
1. FINISH: YELLOW CHROMATE

REV.	DESCRIPTION	ENG.	E.C.O.	YY.MM.DD
B	ARM CHANGED FROM 11196 TO 11668	K.T.		14.06.09
C	20363A WAS 11668B & UPDATED DRAWING TITLE	J.I.		14.06.25

UNLESS OTHERWISE SPECIFIED DIMENSIONS ARE IN INCHES.

TOLERANCES AND SURFACE FINISH:

DECIMAL	LINEAR	ANGULAR	T.I.R.	POSITION	FINISH
.xxxx	±.002	±.05°	.002	Ø.002	32RA
.xxx	±.005	±.10°	.005	Ø.005	63RA
.xx	±.010	±.25°	.010	Ø.010	125RA
.x	±.020	±.50°	.020	Ø.020	250RA
.	±.063	±1.0°	.063	Ø.063	500RA

BREAK EDGES, UNLESS NOTED .016±.003 x 45°
FILLETS, UNLESS NOTED R.010±.003

ITEM NO.	PART NUMBER	DESCRIPTION	QTY.
1	17888A	RAD 15DX REACTION BLANK	1
2	20363A	Q12801 - RAD 15DX 90 DEGREE ARM BLANK	1

C.A.D. SCALE 1:2

MATERIAL

WEIGHT

NAME	YY.MM.DD
DRAWN	C.D. 13.02.21
ENG. CHKD	
Q.A. CHKD	
MFG. CHKD	
ENG. APPD	

NEW WORLD TECHNOLOGIES INCORPORATED

PROPRIETARY AND CONFIDENTIAL

THE INFORMATION CONTAINED HEREIN IS THE CONFIDENTIAL PROPERTY OF NEW WORLD TECHNOLOGIES. ANY REPRODUCTION WITHOUT PRIOR WRITTEN CONSENT FROM NEW WORLD TECHNOLOGIES IS STRICTLY PROHIBITED.

NEW WORLD TECHNOLOGIES INCORPORATED
ABBOTSFORD, BRITISH COLUMBIA, CANADA
Phone: 604-852-0405, Fax: 604-852-0269
Website: www.radtorque.com

REACTION ARM RAD 15DX 17888-20363 - 90°

DWG. NO. **17375C** REV. SHT. 1/1 SZ. A

Third Angle Projection