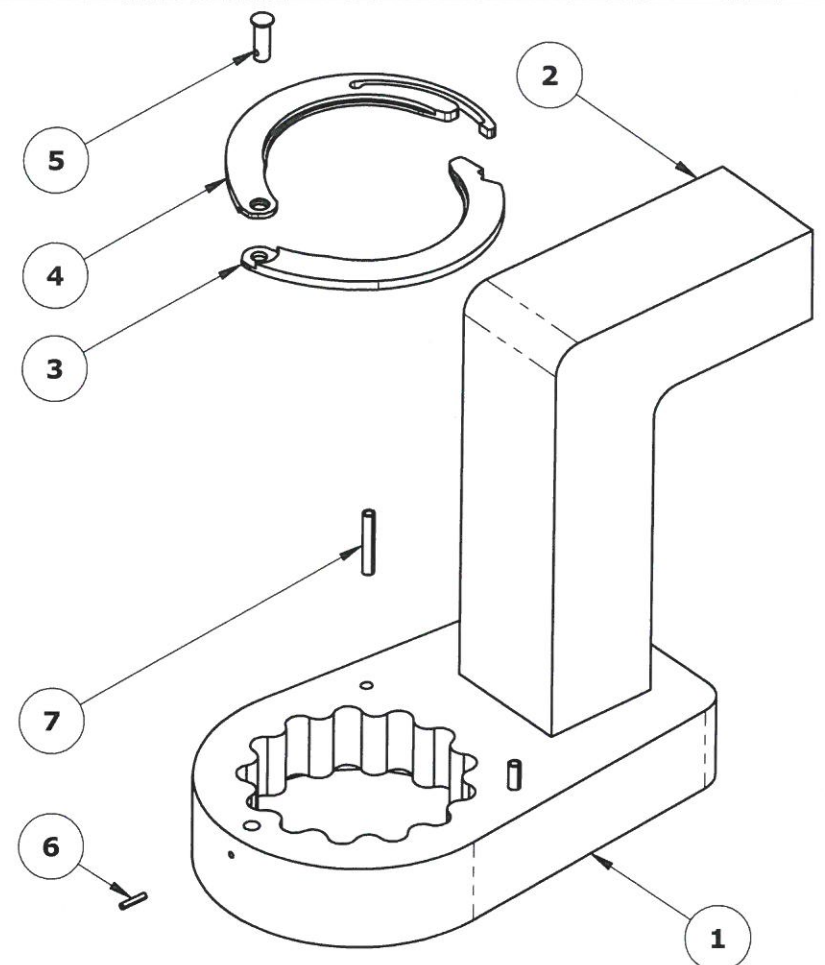
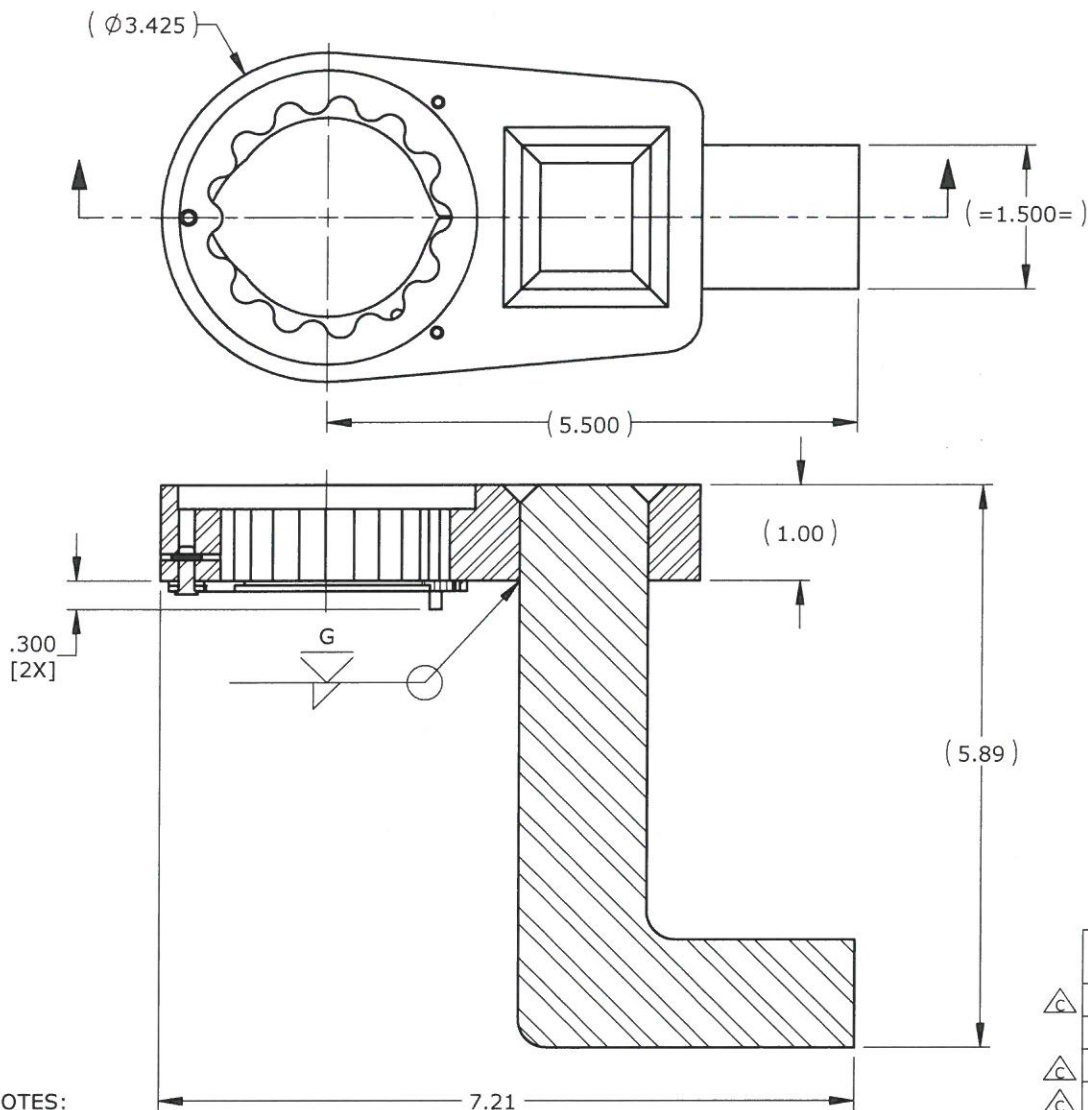


**DO NOT SCALE DRAWING**



NOTES:  
 1. SEE DRAWING 17515 FOR QUICK RELEASE ASSEMBLY INSTRUCTIONS  
 2. FINISH: YELLOW CHROMATE

ITEM NO.	PART NUMBER	DESCRIPTION	QTY.
△ C	1	19995B Q11761 - RAD 25GX HD SELF-RETAINING R.A. BLANK	1
	2	14752B DEEP ARM	1
△ C	3	16661A RAD 25GX REACTION ARM RETAINING CLIP - RH	1
△ C	4	16662A RAD 25GX REACTION ARM RETAINING CLIP - LH	1
△ C	5	16676A QUICK RELEASE PIN	1
△ C	6	16663A SPRING PIN 1/16" DIAM X 5/16"	1
△ C	7	22435A DIA 1/8 X 3/4 SPRING PIN	2

REV.	DESCRIPTION	ENG.	E.C.O.	YY.MM.DD	UNLESS OTHERWISE SPECIFIED DIMENSIONS ARE IN INCHES.	C.A.D. SCALE	1:4	PROPRIETARY AND CONFIDENTIAL THE INFORMATION CONTAINED HEREIN IS THE CONFIDENTIAL PROPERTY OF NEW WORLD TECHNOLOGIES. ANY REPRODUCTION WITHOUT PRIOR WRITTEN CONSENT FROM NEW WORLD TECHNOLOGIES IS STRICTLY PROHIBITED.		
C	REDRAWN IN SOLIDWORKS, 16275C=19995B, ADDED QUICK RELEASE COMPONENTS	J.I.		14.08.05		MATERIAL		NEW WORLD TECHNOLOGIES INCORPORATED ABBOTSFORD, BRITISH COLUMBIA, CANADA Phone: 604-852-0405, Fax: 604-852-0269 Website: www.ractorque.com		
					TOLERANCES AND SURFACE FINISH:	WEIGHT		TITLE <b>Q11764 - RAD 25GX HD SELF-RETAINING DEEP REACTION ARM</b>		
					DECIMAL .xxx ±.002 ±.05° .002	NAME A.M.	11.08.16	DWG. NO. <b>16391C</b>		
					ANGULAR .xxx ±.005 ±.10° .005	ENG. CHKD D.S.		REV. SHT. <b>1/1</b>		
					T.I.R. .xx ±.010 ±.25° .010	Q.A. CHKD A.M.		SZ. <b>A</b>		
					POSITION .x ±.020 ±.50° .020	MFG. CHKD P.M.				
					FINISH .x ±.063 ±1.0° .063	ENG. APPD D.S.				
					BREAK EDGES, UNLESS NOTED .016±.003 x 45°	Third Angle Projection				
					FILLET, UNLESS NOTED R.010±.003					

**RELEASED FOR FABRICATION**  
**ENGINEERING DATE AUG 5/14**