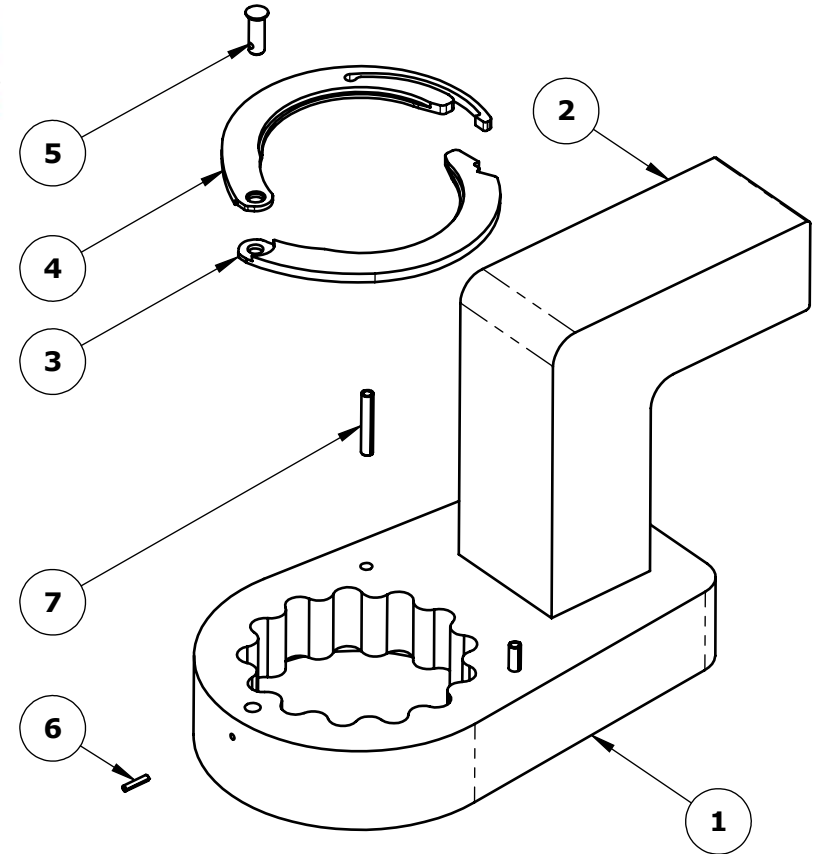
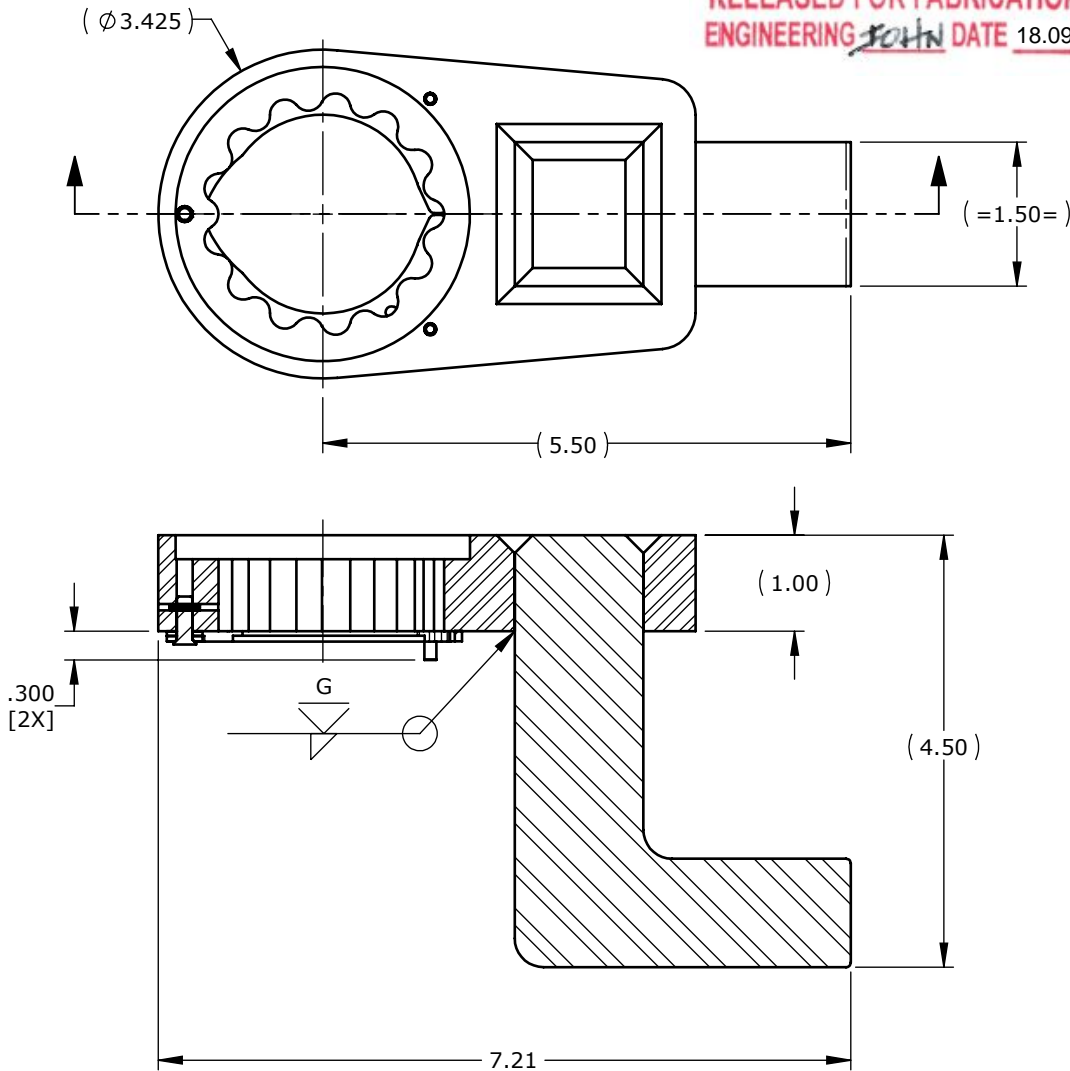


**DO NOT SCALE DRAWING**


RELEASED FOR FABRICATION  
 ENGINEERING ~~JOHN~~ DATE 18.09.18



**NOTES:**

1. SEE DRAWING 17515 FOR QUICK RELEASE ASSEMBLY INSTRUCTIONS
2. FINISH: YELLOW CHROMATE

ITEM NO.	PART NUMBER	DESCRIPTION	QTY.
1	19995B	BLANK-2.0-1.34/1.50-3.88-1.0-SR2 SELF RETAINING	1
2	13488C	ARM-4.5-3.5-1.5-90	1
3	16661A	RAD 25GX REACTION ARM RETAINING CLIP - RH	1
4	16662A	RAD 25GX REACTION ARM RETAINING CLIP - LH	1
5	16676A	QUICK RELEASE PIN	1
6	16663A	SPRING PIN 1/16" DIAM X 5/16"	1
7	22435A	DIA 1/8 X 3/4 SPRING PIN	2

REV.	DESCRIPTION	ENG.	E.C.O.	YY.MM.DD	UNLESS OTHERWISE SPECIFIED DIMENSIONS ARE IN INCHES.	C.A.D. SCALE	1:4	 <b>PROPRIETARY AND CONFIDENTIAL</b> THE INFORMATION CONTAINED HEREIN IS THE CONFIDENTIAL PROPERTY OF NEW WORLD TECHNOLOGIES. ANY REPRODUCTION WITHOUT PRIOR WRITTEN CONSENT FROM NEW WORLD TECHNOLOGIES IS STRICTLY PROHIBITED. NEW WORLD TECHNOLOGIES INCORPORATED ABBOTSFORD, BRITISH COLUMBIA, CANADA Phone: 604-852-0405, Fax: 604-852-0269 Website: www.radtorque.com			
D	REDRAWN IN SW, ADDED QUICK RELEASE COMPONENTS, TITLE WAS "Q11761 - RAD HD SELF-RETAINING REACTION ARM"	J.I.		14.07.07				<b>NEW WORLD TECHNOLOGIES INCORPORATED</b> TITLE <b>RA-E-RAD 2500 WIND-90-SR2-SELF RETAINING</b>			
					TOLERANCES AND SURFACE FINISH:	WEIGHT		DRAWN A.M. 10.01.27 ENG. CHKD D.S. Q.A. CHKD A.M. MFG. CHKD P.M. ENG. APPD D.S.			
					DECIMAL .xxxx ±.002	LINEAR .xxx ±.005	ANGULAR .xx ±.010	ANGULAR .x ±.020	T.I.R. ±.05°	POSITION .002	FINISH 32RA
											500RA
					BREAK EDGES, UNLESS NOTED		.016 ± .003 x 45°				
					FILLETS, UNLESS NOTED		R.010 ± .003				
								Third Angle Projection	DWG. NO. <b>16275D</b>	REV. SHT. 1/1	SZ. A