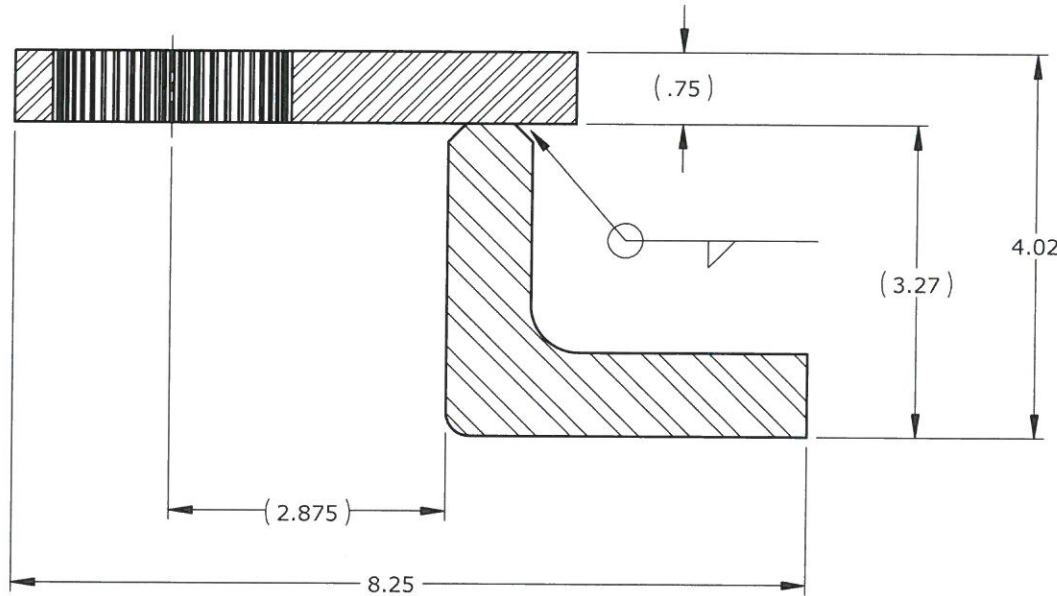
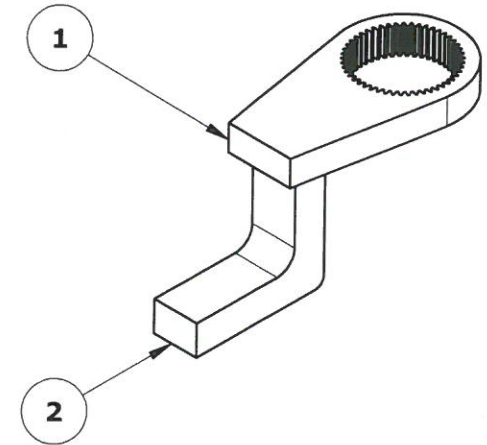
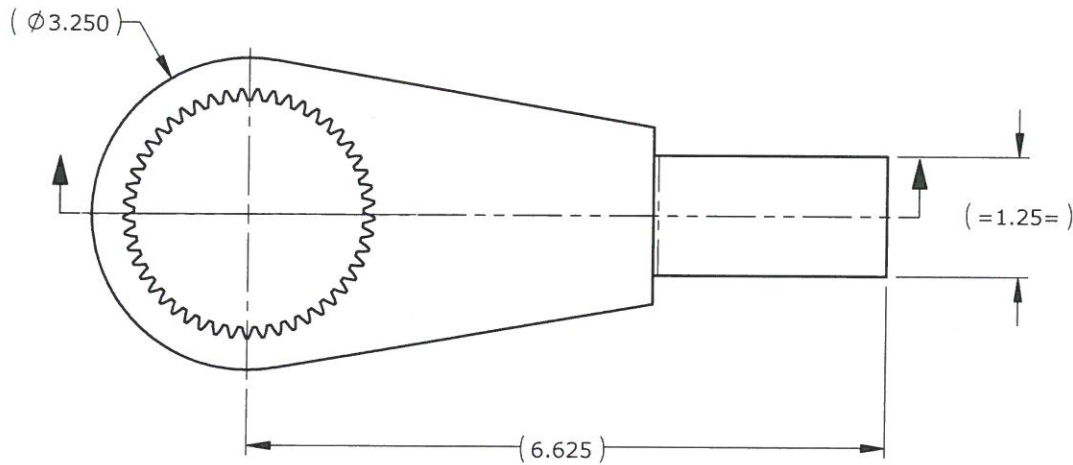


DO NOT SCALE DRAWING



RELEASED FOR FABRICATION
ENGINEERING *John* DATE 14.09.16

NOTES:

1. FINISH: YELLOW CHROMATE

ITEM NO.	PART NUMBER	DESCRIPTION	QTY.
1	10005C	BLANK 1800NG	1
2	22694A	ARM 3.27 X 3.75 X 1.25 90°	1

REV.	DESCRIPTION	ENG.	E.C.O.	YY.MM.DD	UNLESS OTHERWISE SPECIFIED DIMENSIONS ARE IN INCHES.	C.A.D. SCALE	1:2
B	REDRAWN IN SOLIDWORKS, MODIFIED 12718=22694A	J.I.		14.09.16		MATERIAL	
					TOLERANCES AND SURFACE FINISH:	WEIGHT	
					DECIMAL LINEAR	NAME	YY.MM.DD
					.xxxx ±.002 ±.05° .002 ϕ .002 32RA	DRAWN	A.M. 09.04.20
					.xxx ±.005 ±.10° .005 ϕ .005 63RA	ENG. CHKD	D.S.
					.xx ±.010 ±.25° .010 ϕ .010 125RA	Q.A. CHKD	A.M.
					.x ±.020 ±.50° .020 ϕ .020 250RA	MFG. CHKD	P.M.
					. ±.063 ±1.0° .063 ϕ .063 500RA	ENG. APPD	D.S.
					BREAK EDGES, UNLESS NOTED .016±.003 x 45°	TITLE	
					FILLETS, UNLESS NOTED R.010±.003	Q11130 - 1800NG REACTION ARM 90°	
					DWG. NO. 14809B		REV. SHT. SZ. 1/1 A

NEW WORLD TECHNOLOGIES INCORPORATED

THE INFORMATION CONTAINED HEREIN IS THE CONFIDENTIAL PROPERTY OF NEW WORLD TECHNOLOGIES. ANY REPRODUCTION WITHOUT PRIOR WRITTEN CONSENT FROM NEW WORLD TECHNOLOGIES IS STRICTLY PROHIBITED.

NEW WORLD TECHNOLOGIES INCORPORATED
ABBOTSFORD, BRITISH COLUMBIA, CANADA
Phone: 604-852-0405, Fax: 604-852-0269
Website: www.radtorque.com

Third Angle Projection