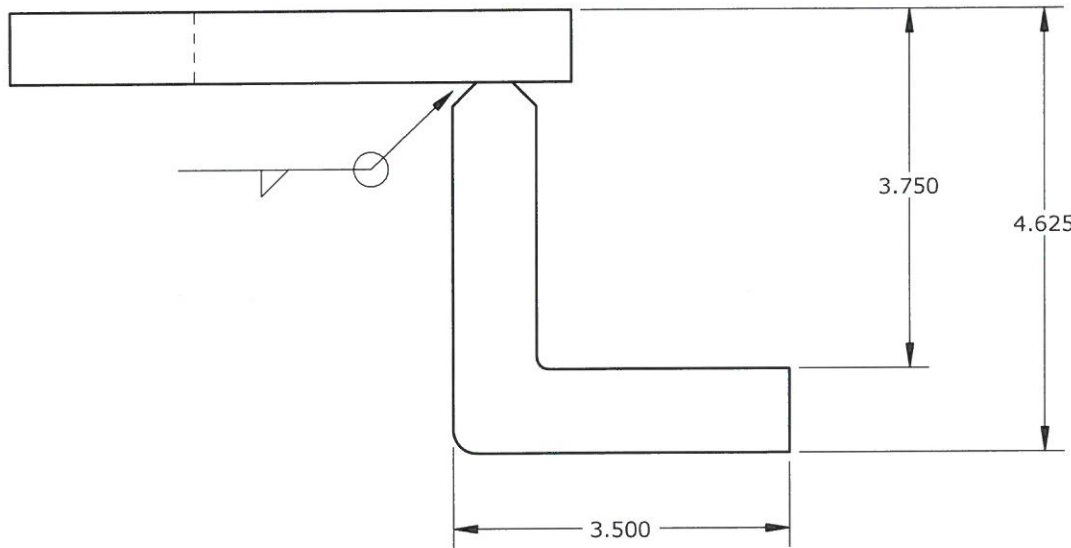
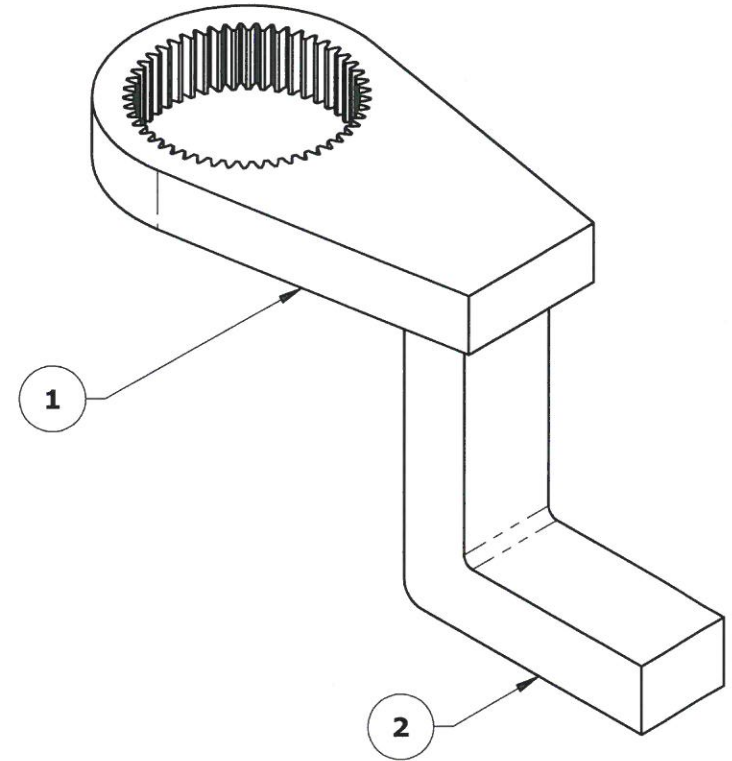
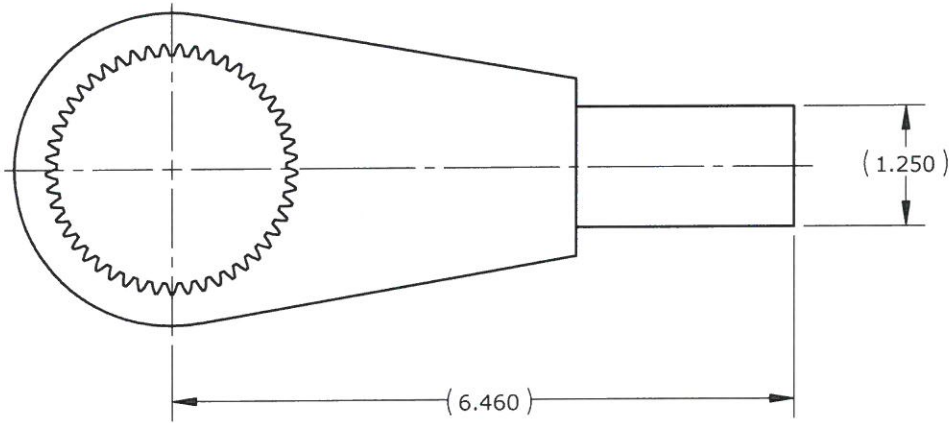


DO NOT SCALE DRAWING





RELEASED FOR FABRICATION

ENGINEERING *John* DATE *FEB 27/14*

NOTES:

1. FINISH: YELLOW CHROMATE

ITEM NO.	PART NUMBER	DESCRIPTION	QTY.
1	10005C	BLANK 1800NG	1
2	21964A	RAD 1800NG 90° REACTION LEG	1

REV.	DESCRIPTION	ENG.	E.C.O.	YY.MM.DD	UNLESS OTHERWISE SPECIFIED DIMENSIONS ARE IN INCHES.	C.A.D. SCALE	1:2	 NEW WORLD TECHNOLOGIES <small>INCORPORATED</small>	PROPRIETARY AND CONFIDENTIAL <small>THE INFORMATION CONTAINED HEREIN IS THE CONFIDENTIAL PROPERTY OF NEW WORLD TECHNOLOGIES. ANY REPRODUCTION WITHOUT PRIOR WRITTEN CONSENT FROM NEW WORLD TECHNOLOGIES IS STRICTLY PROHIBITED.</small> <small>NEW WORLD TECHNOLOGIES INCORPORATED ABBOTSFORD, BRITISH COLUMBIA, CANADA Phone: 604-852-0405, Fax: 604-852-0269 Website: www.radtorque.com</small>
					TOLERANCES AND SURFACE FINISH:	MATERIAL	N/A		
					DECIMAL LINEAR ANGULAR T.I.R. POSITION FINISH	WEIGHT			
					.xxxx ±.002 ±.05° .002 Ø.002 32RA	NAME	YY.MM.DD		
					.xxx ±.005 ±.10° .005 Ø.005 63RA	DRAWN	J.I.	14.02.27	TITLE
					.xx ±.010 ±.25° .010 Ø.010 125RA	ENG. CHKD	D.S.		Q10800 - RAD 1800NG 90° ARM
					.x ±.020 ±.50° .020 Ø.020 250RA	Q.A. CHKD	A.M.		
					. ±.063 ±1.0° .063 Ø.063 500RA	MFG. CHKD	P.M.		
					BREAK EDGES, UNLESS NOTED .016±.003 x 45°	ENG. APPD	D.S.		Third Angle Projection 
					FILLETES, UNLESS NOTED R.010±.003			DWG. NO.	REV. SHT. SZ.
								11699A	1/1 A