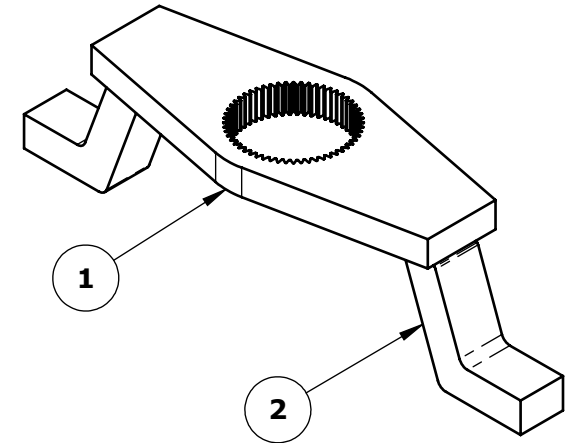
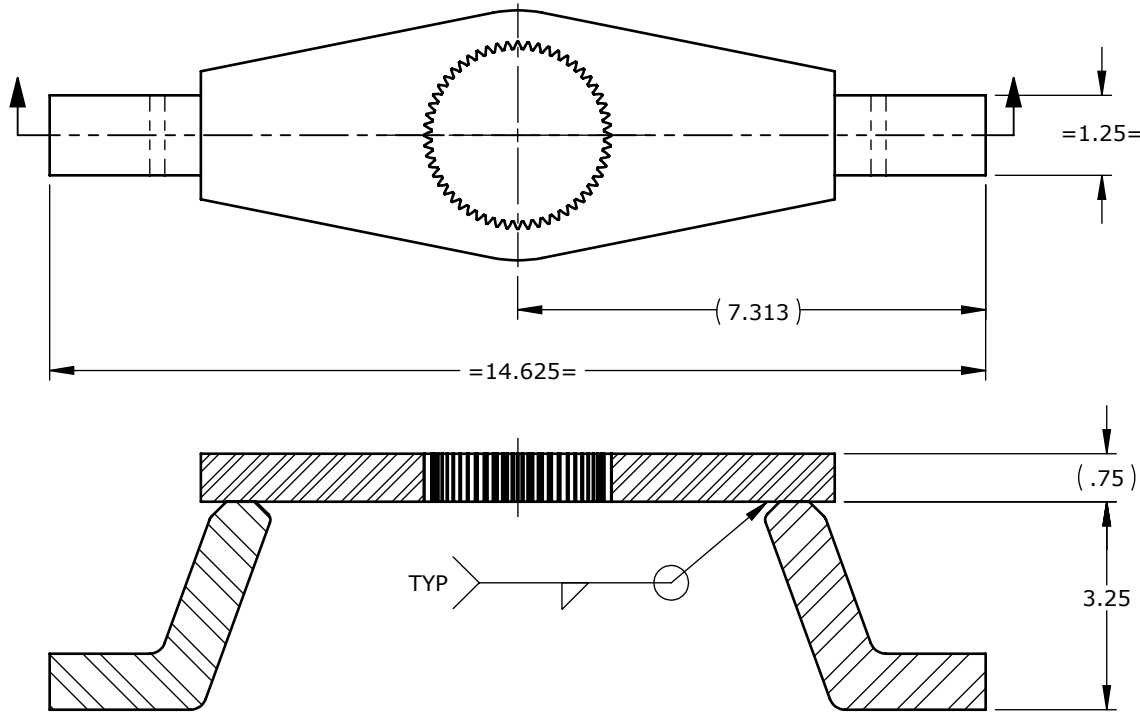


DO NOT SCALE DRAWING



RELEASED FOR FABRICATION
ENGINEERING JOHN DATE 16.03.16

NOTES:

1. FINISH: YELLOW CHROMATE

ITEM NO.	PART NUMBER	DESCRIPTION	QTY.
1	10026B	DOUBLE ENDED REACTION BLANK RAD 30	1
2	11668B	ARM PROFILE - 1800NG	2

REV.	DESCRIPTION	ENG.	E.C.O.	YY.MM.DD	UNLESS OTHERWISE SPECIFIED DIMENSIONS ARE IN INCHES.	C.A.D. SCALE	1:4	NEW WORLD TECHNOLOGIES INCORPORATED	
B	REDRAWN IN SOLIDWORKS, ADDED B.O.M. & WELD DETAILS	J.I.		16.03.15	TOLERANCES AND SURFACE FINISH:	MATERIAL		<p>PROPRIETARY AND CONFIDENTIAL THE INFORMATION CONTAINED HEREIN IS THE CONFIDENTIAL PROPERTY OF NEW WORLD TECHNOLOGIES. ANY REPRODUCTION WITHOUT PRIOR WRITTEN CONSENT FROM NEW WORLD TECHNOLOGIES IS STRICTLY PROHIBITED.</p> <p>NEW WORLD TECHNOLOGIES INCORPORATED ABBOTSFORD, BRITISH COLUMBIA, CANADA Phone: 604-852-0405, Fax: 604-852-0269 Website: www.radtorque.com</p>	
					DECIMAL LINEAR ANGULAR T.I.R. POSITION FINISH	WEIGHT		<p>NEW WORLD TECHNOLOGIES INCORPORATED</p>	
					.xxxx ±.002 ±.05° .002 Ø.002 32RA	DRAWN	NAME	YY.MM.DD	TITLE
					.xxx ±.005 ±.10° .005 Ø.005 63RA	ENG. CHKD	P.D.	06.11.09	DOUBLE ENDED R.A. RAD 30 10026-11668
					.xx ±.010 ±.25° .010 Ø.010 125RA	Q.A. CHKD			
					.x ±.020 ±.50° .020 Ø.020 250RA	MFG. CHKD			
					. ±.063 ±1.0° .063 Ø.063 500RA	ENG. APPD			
					BREAK EDGES, UNLESS NOTED .016±.003 x 45°	Third Angle Projection		DWG. NO.	REV. SHT. SZ.
					FILLETS, UNLESS NOTED R.010±.003			10027B	1/1 A