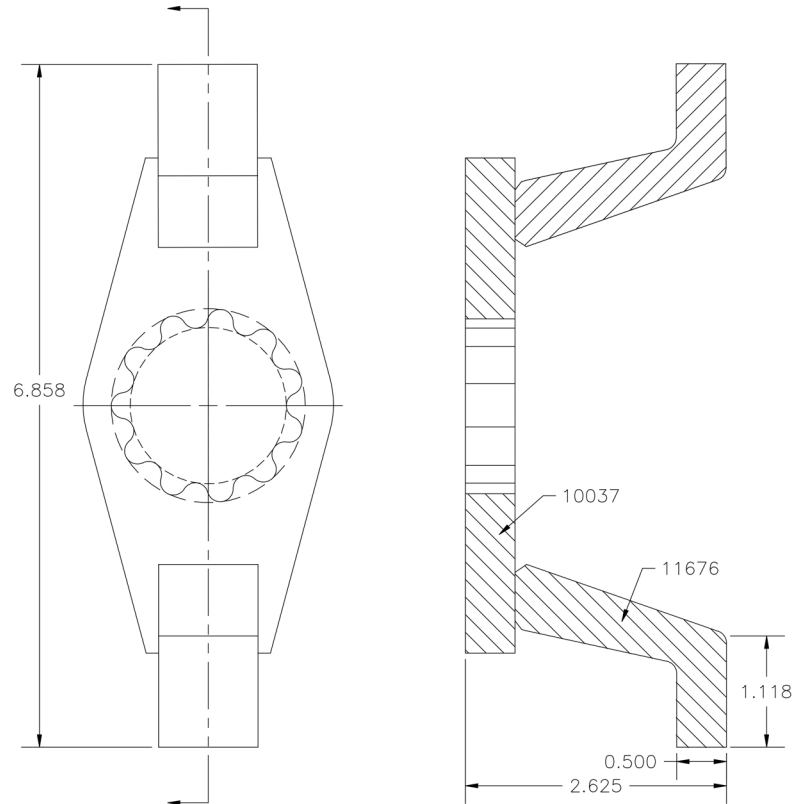


**PART NUMBER: 10688**

**REACTION ARM: DOUBLE ENDED (WELDABLE) RAD 350SL / 475SL M, V-RAD 4 / 6 M**



***DIMENSIONS ARE IN INCHES***



***Proprietary and Confidential***

*The information contain herein is the confidential property of New World Technologies Inc. Any reproduction without prior written consent from New World Technologies Inc. is strictly prohibited.*