

RAD CALIBRATION SYSTEMS 7000

Part Number: **23444**



LIGHTER **FASTER** STRONGER

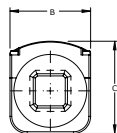
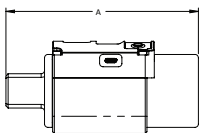
The RAD Calibration Systems have earned their place in calibration laboratories worldwide because of their high accuracy and repeatability.

SPECIFICATIONS

Torque Ranges: 350 ft. lbs. – 7000 ft. lbs.
Weight: 11.0 lbs.
Square Drive: 1.5"
Repeatability: ± 1
Accuracy: $\pm 1\%$



DIMENSIONS



DIMENSION A	DIMENSION B	DIMENSION C
6.75"	2.50"	4.00"



Bluetooth connectivity to
your smart phone or tablet



Class 1 Division
2 Group A, B,
C, D T4



Accredited
ISO/IEC 17025

RADTORQUE.COM

NEW WORLD TECHNOLOGIES INC

30580 PROGRESSIVE WAY | ABBOTSFORD, BC V2T 6Z2 | CANADA | **1.800.983.0044**