

# RAD CALIBRATION SYSTEMS 3500

Part Number: **23443**



## LIGHTER **FASTER** STRONGER

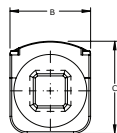
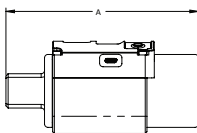
The RAD Calibration Systems have earned their place in calibration laboratories worldwide because of their high accuracy and repeatability.

### SPECIFICATIONS

Torque Ranges: 175 ft. lbs. – 3500 ft. lbs.  
Weight: 10.0 lbs.  
Square Drive: 1.5"  
Repeatability: +/-1  
Accuracy: +/-1%



### DIMENSIONS



DIMENSION A	DIMENSION B	DIMENSION C
6.75"	2.50"	4.00"



Bluetooth connectivity to  
your smart phone or tablet



Class 1 Division  
2 Group A, B,  
C, D T4  
Accredited  
ISO/IEC 17025

**RADTORQUE.COM**

**NEW WORLD TECHNOLOGIES INC**

30580 PROGRESSIVE WAY | ABBOTSFORD, BC V2T 6Z2 | CANADA | **1.800.983.0044**