

RAD CALIBRATION SYSTEMS 1500

Part Number: **23442**



LIGHTER **FASTER** STRONGER

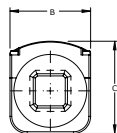
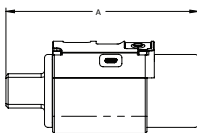
The RAD Calibration Systems have earned their place in calibration laboratories worldwide because of their high accuracy and repeatability.

SPECIFICATIONS

Torque Ranges: 75 ft. lbs. – 1500 ft. lbs.
Weight: 4.0 lbs.
Square Drive: 1.0"
Repeatability: ± 1
Accuracy: $\pm 1\%$



DIMENSIONS



DIMENSION A	DIMENSION B	DIMENSION C
5.60"	2.35"	2.70"



Bluetooth connectivity to
your smart phone or tablet



Non
Impacting

Safe &
Reliable

Class 1 Division
2 Group A, B,
C, D T4

Accredited
ISO/IEC 17025

RADTORQUE.COM

NEW WORLD TECHNOLOGIES INC

30580 PROGRESSIVE WAY | ABBOTSFORD, BC V2T 6Z2 | CANADA | **1.800.983.0044**